

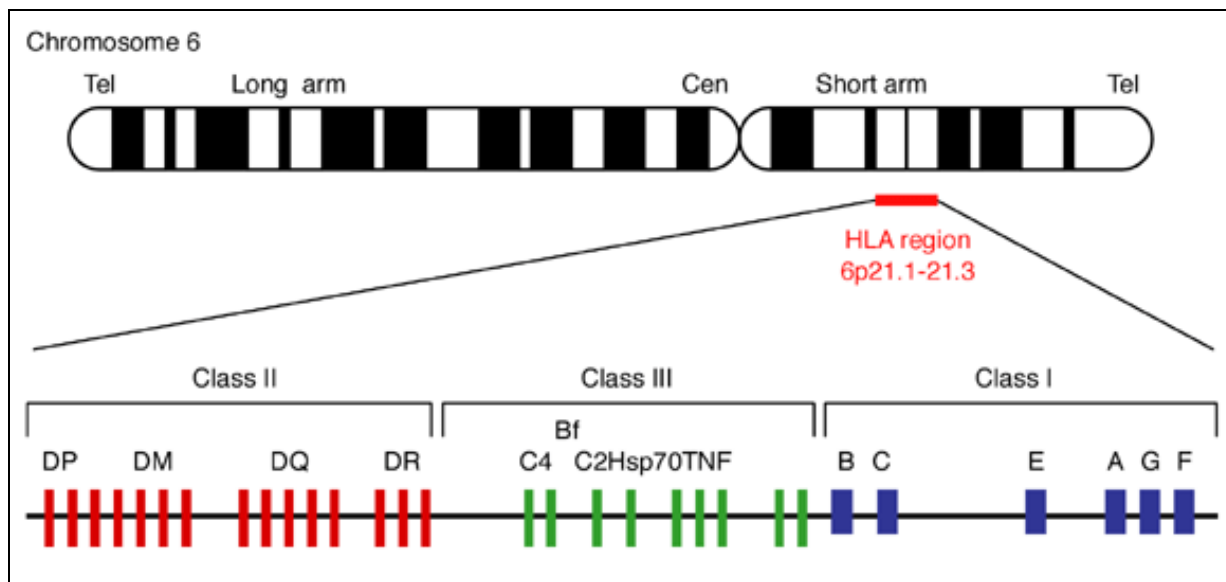
# Transplant Diagnostics (HLA) Market Landscape

## Contents

- 1 Introduction
- 2 HLA Typing Methods
- 3 Comparison of HLA Typing Techniques
- 4 Market Size
- 5 Major Players
- 6 One Lambda Profile
  - ◆ 6.1 Company Overview
  - ◆ 6.2 Key Facts
  - ◆ 6.3 Financials
  - ◆ 6.4 Human Resource Metrics
    - ◇ 6.4.1 Function-wise Data
  - ◆ 6.5 Funding Details
  - ◆ 6.6 Recent News and Developments
- 7 Flash Representation

## Introduction

Human leukocyte antigens (HLA) are molecules found on cell surfaces that regulate how the body recognizes and thus possibly rejects foreign tissue transplants. Molecular profiling of HLA sequences, or tissue typing is performed prior to organ or bone marrow transplantations. HLA testing is a key component in determining the compatibility between potential donors and recipients prior to transplantation to maximize the chances of graft survival and minimize serious immunologic transplant complications. The better the match of HLA types, the higher the likelihood of a successful transplant.



Gene map of the human leukocyte antigen (HLA) region Source: Cambridge University Press

- The HLA molecules control the immune response through recognition of 'self' and 'non-self' and the main function of the HLA molecules is presenting the antigen to the T Lymphocytes and initiating the specific immune response
- HLA system constitutes an immunological barrier which must be avoided or otherwise overcome in clinical transplantation
- For Haemopoietic Stem Cell (HSC) transplants, the degree of HLA matching is critical in determining the probability of Graft-versus-Host disease (GvHD)
- In an attempt to minimise these alloresponses, the HLA class I and class II types of the donor and recipient are matched as closely as possible

The HLA is located on chromosome 6p21.31 and covers a region of about 3.6 Mbp depending on the haplotype. The classical HLA antigens encoded in each region are HLAA, -B, and -Cw in the class I region, and HLA-DR, -DQ and -DP in the class II region. All class I genes are between 3 and 6 kb, whereas class II genes are 4-11 kb long.

One of the main characteristics of the HLA is its extreme polymorphism. Among the expressed loci, the HLA has the greatest degree of polymorphism in the human genome.



## HLA Typing Methods

- HLA typing by serology is the most common method in routine clinical setting
- Due to rapid advances in technology, molecular assays are now regarded as the 'Method of Choice'

### Serology

- Used to be the 'gold' standard
- Antibody-Based Histocompatibility Testing
- Low resolution typing
- Identifies molecules that are actually expressed on the cell & involved in the immune rejection of the mismatched grafts

### Mixed Lymphocyte Culture (MLC)

- Rarely being used now
- Originally used for Class II typing
- Involves culturing together lymphocytes of two individuals where each cell population is able to recognize the 'foreign' HLA class II antigens of the other

### Molecular Assays

- DNA-Based Histocompatibility Testing
- Rapidly becoming the method of choice
- Intermediate & High resolution typing
- Identifies nucleotide polymorphisms, which code for the different allelic variants

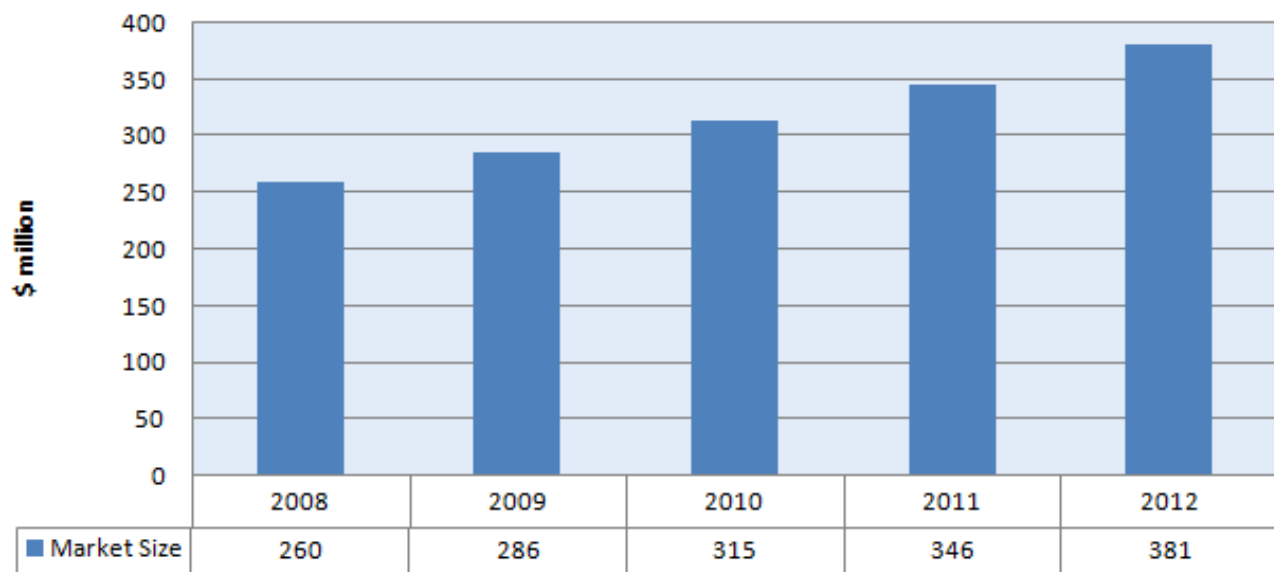
## Comparison of HLA Typing Techniques

Method	Summary	Advantages	Disadvantages
<b>Serology</b>	Serologically testing expressed HLA antigens on the surface of lymphocytes by using monoclonal antibodies	Quicker and cheaper than molecular methods	Does not provide detailed information about variation in alleles. Inability of detecting some alleles in DR molecule
<b>PCR - RFLP</b>	PCR amplified DNA digested with restriction enzyme to generate specific restriction pattern and alleles are identified according to pattern	Distinguishes polymorphisms associated with DR3, DR5 and DR6 haplotypes. Higher specificity than serological methods	Lacks accuracy in polymorphic typing, especially DR3 haplotypes. Long procedure and handling of samples
<b>PCR - SSO</b>	Labeled sequence specific probes are hybridized to PCR amplified DNA and then detected	Most specific technique. High resolution typing within 10 hours. Easy handling of several samples in one run. Does not require controls at each step	Sequences of alleles must be known. Hybridization temperature critical, could lead to false negative hybridization. Lacks accuracy in polymorphic allelic typing
<b>PCR – SSP</b>	PCR amplified DNA using Sequence specific primers (SSP). Primers are designed with specificity-dependent nucleotide on the 3' end	Faster than PCR – RFLP and PCR – SSO. As accurate as PCR – SSO. Cheaper than other Methods	Unequivocal typing of eight DB1806 alleles has been observed
<b>PCR - SBT</b>	DNA amplified by PCR using primers specific for the site of interest. PCR products are purified and then sequenced	More reliable and specific than other methods. New alleles can be detected quite easily	Apparatus needed

## Market Size

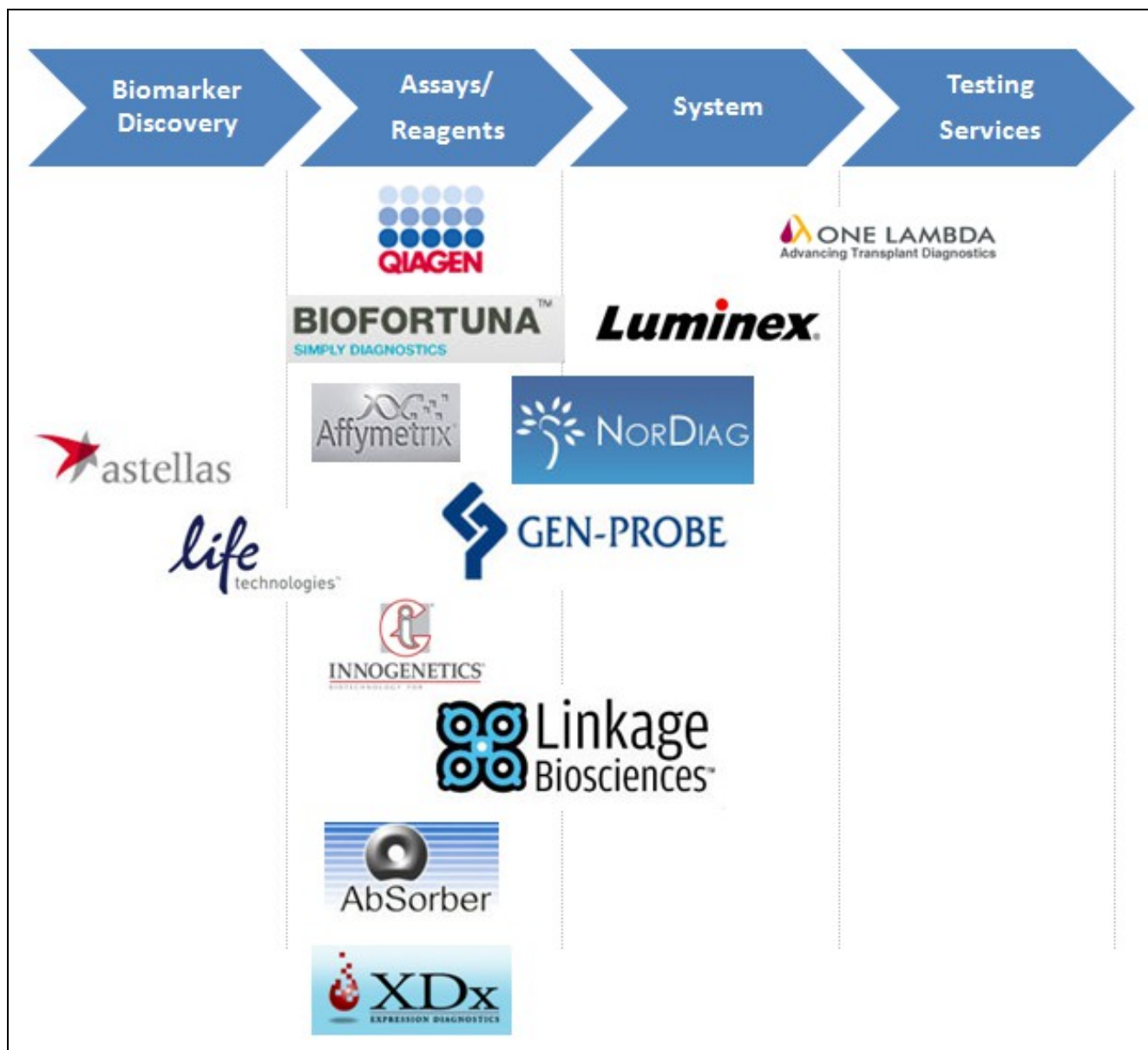
- The market for HLA Testing Services was estimated to be \$ 260 million in 2008
- The indicative annual market growth rate is 10% for this space.

## HLA Testing Services Market



Source: NorDiag & Gen-Probe Investor Presentations

## Major Players



## One Lambda Profile

### Company Overview

One Lambda, Inc. is a medical diagnostic company based in Canoga Park, California. It was founded by Paul Terasaki and George Ayoub in April, 1984.

One Lambda develops and distributes histocompatibility reagents and semi-automated laboratory equipment for hospitals, research centers, and institutions involved in human organ transplantation and paternity testing. The reagents produced are primarily used to determine genetic compatibility between an organ donor and a recipient. Using the Terasaki tray design, Human Leukocyte Antigen (HLA) typing tests or histocompatibility tests are produced with these reagents.

The company markets several lines of HLA typing tests utilizing both serological and molecular technologies. One Lambda also manufactures a comprehensive line of laboratory instrumentation and computer software products that are used to simplify and automate testing procedures and final test evaluation.

One Lambda presently services more than 1,400 laboratories worldwide.

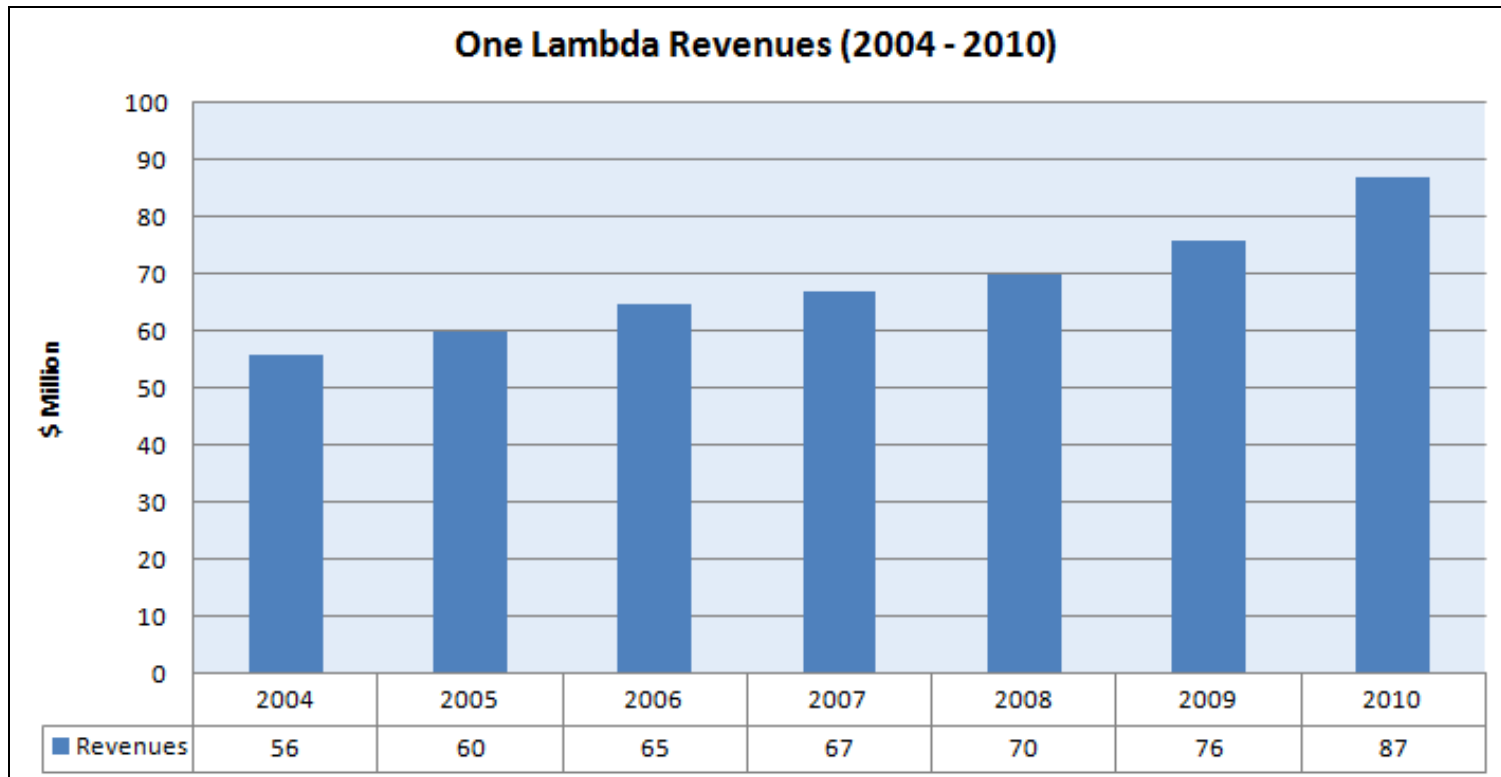
### Key Facts

<b>Website</b>	<a href="http://www.onelambda.com">www.onelambda.com</a>
<b>Administrative Department</b>	21200 Oxnard Street Woodland Hills, CA 91367, USA
<b>R&amp;D and Manufacturing</b>	21001 Kittridge Street Canoga Park, CA 91303, USA Tel: +1 818 702 0042 Fax: +1 818 702 6904
<b>Regional Office</b>	Synergie - Le Millenaire 770, Rue Alfred Nobel

	34000 Montpellier, France Tel: +33 4 99 13 60 20 Fax: +33 4 67 64 60 40
<b>Ownership</b>	Private
<b>Fiscal Year Ending</b>	31, December
<b>Employees (2011)</b>	340
<b>Revenues (2010)</b>	\$ 87 M

## Financials

- One Lambda has recorded revenues of \$ 87 Million in 2010 according to Privco, a private company information database. According to Experian credit report it was \$ 87.5 Million in 2010.
- CAGR of revenues for the period 2004 - 2010 is 7.62%



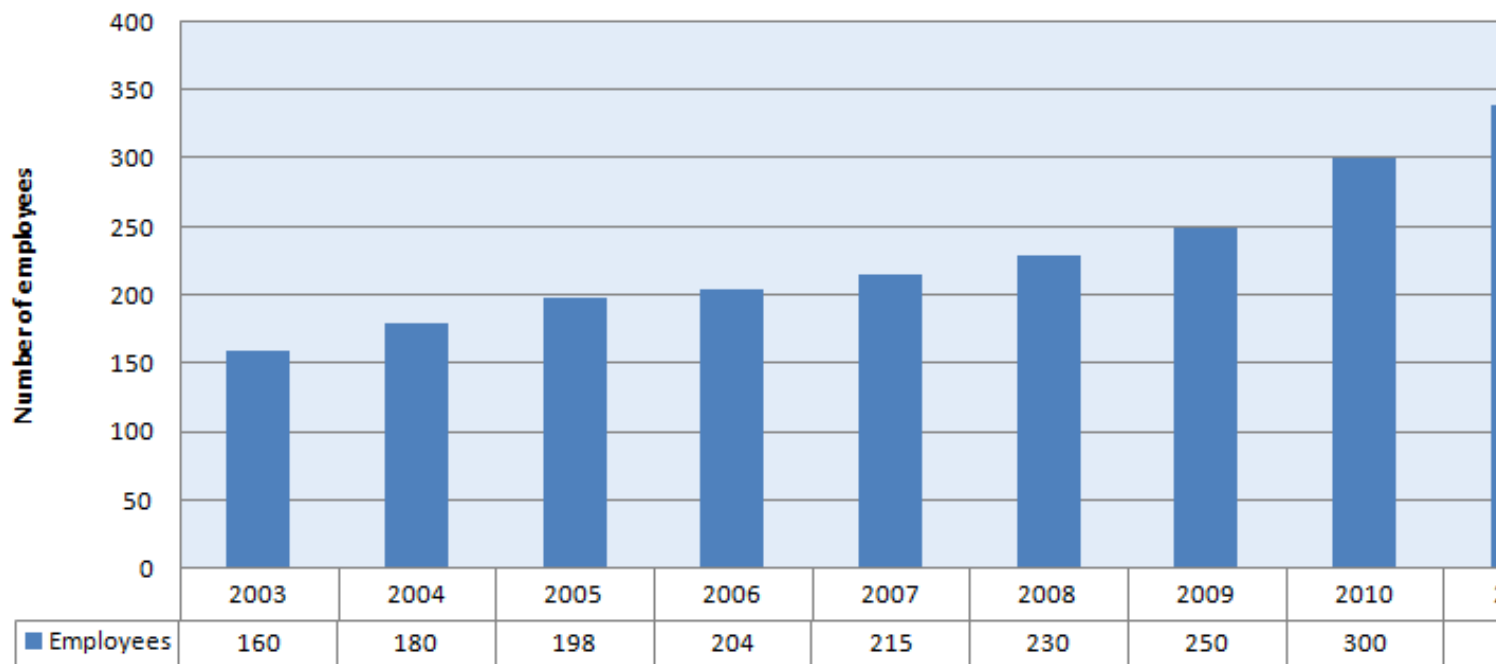
Source: Privco Report & Experian Credit Report

## Human Resource Metrics

- Total number of employees in One Lambda at present (2011) are about 340
- CAGR of employees for the period 2003 - 2011 is 9.88%
- CAGR of employees for the period 2004 - 2010 is 8.89%

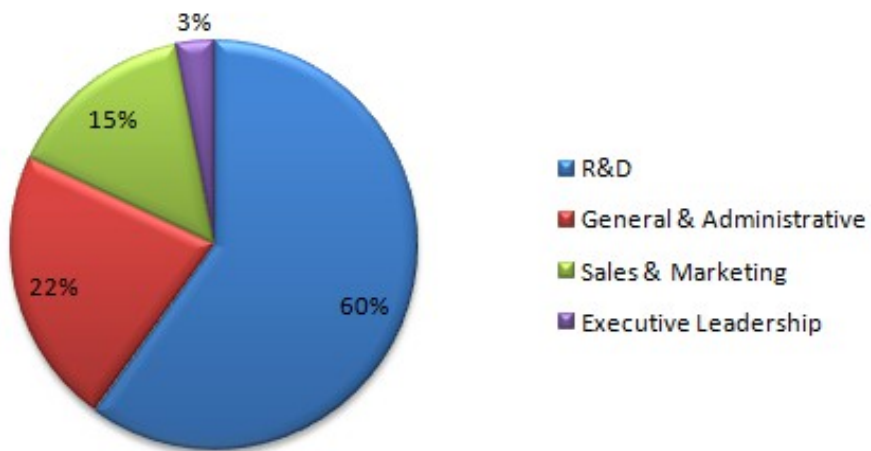


## One Lambda Employees (2003 - 2011)



Source: Privco Report  
Function-wise Data

## Employees Composition



Source: LinkedIn

Function	Growth Rate (Nov 2010 - Oct 2011)
R&D	29%
General & Administrative	0%
Sales & Marketing	-17%
Executive Leadership	0%

## Funding Details

Date	Investor	Value (\$)	Funding Type
2005	National Institute of Health	885,379	Grant
2006	National Institute of Health	836,774	Grant



2007	National Institute of Health	779,516	Grant
------	------------------------------	---------	-------

Source: Privco Report, News Articles

## Recent News and Developments

S.No.	Date	Details
1	October 2011	One Lambda, Inc. won a \$1.5 million federal contract from the U.S. Naval Medical Logistics Command, Fort Detrick, Md., to develop the next generation high resolution human leukocyte antigen (HLA) typing reagents for the NMRC HLA Typing Program and Bone Marrow Research Directorate
2	April 2011	One Lambda, Inc. and the National Kidney Registry announced the introduction of The Toolbox, a new innovative Web module. The Toolbox is designed to help medical professionals make intelligent decisions on donor selection based on antibody profiles of patients
3	December 2010	Luminex Corporation and One Lambda, Inc. have agreed to a long-term renewal of their 10-year strategic partnership aimed at developing platforms and technologies for human leukocyte antigen (HLA) typing and antibody screening for the organ transplantation market

Source: News Articles

## Flash Representation

This is supposed to be a flash animation. You'll need the flash plugin and a browser that supports it to view it.